



TIN CEILINGS

CORNICE • MOLDINGS • MEDALLIONS

4400 Willow Parkway • Cleveland, OH 44125 • Toll Free: 866-88M-BOSS (866- 886-2677) • FAX: 216-641-7387

DECORATING AND STYLE

When it comes to home decorating, the number one mistake (for understandable reasons) is the fear of making a mistake. This lack of confidence leads to a vicious spiral of self-doubt and bland (as well as bad) decorating. You don't want is to get caught in this world of self-doubt because it's a slippery slope from being 'afraid to break a rule' to going overboard with 'matching everything'.

Following are several tips that will help you make wise decisions about our products: ones that will make your room(s) look spectacular without being over-done. Remember though, these rules are just guidelines and don't always apply to every room design. So, be creative, be daring, and do it smartly.

No matter what, however, remember there are very few decorating mistakes that cannot be fixed with some hard work, a little imagination and a can of paint.

Styles

Having a 'STYLE' in mind goes a long way to helping guide the pattern and finish decisions you make. Often the exterior design of your home helps select an interior style, but this is not always the case. For example, Traditional (Colonial) homes are sometimes re-born with very contemporary interiors. Common and popular styles include: Traditional, Country, Contemporary, Victorian, Arts and Crafts, Cottage and Urban/Metro to name a few. So, with these in mind, consider the overall ambience you want to create in your rooms early on in the decorating process. That will go a long way toward making the final result comfortable for you. Here are some of the common decorating styles using M-Boss Inc. products:

INDEX

- 2.....CONTEMPORARY, METRO
- 2.....TRADITIONAL, COUNTRY
- 2.....ARTS AND CRAFTS
- 3.....VICTORIAN
- 3.....ECLECTIC
- 4.....CREATE A FOCAL POINT
- 4.....PATTERNS
- 5.....FINISHES
- 5.....THEME ROOMS
- 6.....MIX AND MATCH PATTERNS
- 6.....FINISHING TOUCHES
- 6.....CORNICE
- 7.....MOLDING
- 7.....FILLERS
- 7.....MEDALLIONS





TIN CEILINGS

CORNICE • MOLDINGS • MEDALLIONS

4400 Willow Parkway • Cleveland, OH 44125 • Toll Free: 866-88M-BOSS (866- 886-2677) • FAX: 216-641-7387

CONTEMPORARY, METRO



TRADITIONAL, COUNTRY



ARTS AND CRAFTS





TIN CEILINGS

CORNICE • MOLDINGS • MEDALLIONS

4400 Willow Parkway • Cleveland, OH 44125 • Toll Free: 866-88M-BOSS (866- 886-2677) • FAX: 216-641-7387

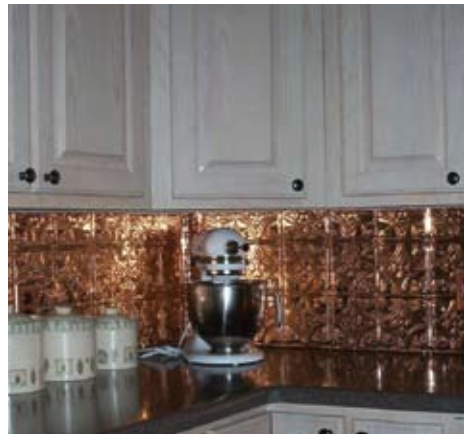
VICTORIAN



ECLECTIC



BACKSPLASHES



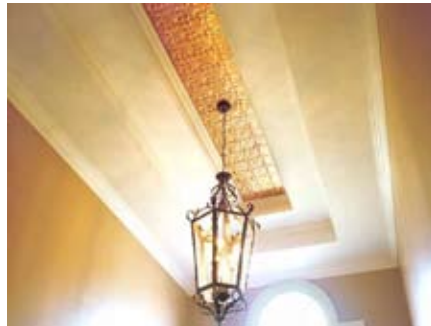


TIN CEILINGS

CORNICE • MOLDINGS • MEDALLIONS

4400 Willow Parkway • Cleveland, OH 44125 • Toll Free: 866-88M-BOSS (866- 886-2677) • FAX: 216-641-7387

CREATE A FOCAL POINT



STYLE TIP!

To show how important creating a focal point is, you should do a little experiment: walk into any room and look around. Is there a focal point, a place where your eyes are naturally drawn? If not, your room is missing a very important ingredient of good design. Every room needs to have a 'focal point'. And if a focal point doesn't already exist then you have to create one. An M-Boss Inc. pressed metal ceiling is the perfect solution to creating a dramatic focal point in a room. Whether it's an entire ceiling, a tray ceiling or just a medallion, it's a dramatic element that creates a focal point.

PATTERNS

All M-Boss Inc. panels are 24" x 24" (2' x 2'). These panels are available in over 200 patterns. Within the panels, there are 3", 6", 12" and 24" repeating patterns.



3"

6"

12"

24"

- 3" patterns repeat 64 times (8 times across one side of the panel) and are recommended for wall applications and small ceilings less than 25 square feet
- 6" patterns repeat 16 times (4 times across one side of the panel) and are recommended for wall applications and small ceilings less than 50 square feet.
- 12" patterns repeat 4 times (2 times across one side of the panel) and are recommended for average sized rooms under 250 square feet.
- 24" patterns have no repeat on a standard sized tin ceiling panel and are generally recommended for large sized rooms over 250 square feet. 24" patterns can create dramatic results in a small room, especially when combined with filler panels and cornice.

STYLE TIP!



Generally, the smaller the room, the smaller the repeating pattern. That said, a 24" pattern when combined with a filler panel and cornice can create a very dramatic effect.

Small room with 24" pattern



TIN CEILINGS

CORNICE • MOLDINGS • MEDALLIONS

4400 Willow Parkway • Cleveland, OH 44125 • Toll Free: 866-88M-BOSS (866- 886-2677) • FAX: 216-641-7387

FINISHES

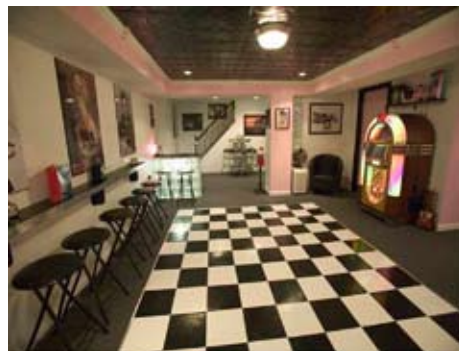


M-Boss Inc. has over 100 finishes that are sure to match any décor. (More are being added on frequent basis so check our web site often). M-Boss Inc. supplies several Artisan finishes that are hand-applied on each individual panel by artists. These finishes provide a beautiful, custom look; however, the color may vary in appearance based on your selected pattern and may vary from panel to panel. Since the design and pattern of the selected ceiling panel will affect the way a finish appears it is recommended that you purchase a sample before ordering a large quantity.

STYLE TIP!

Lighter color panels as well as 6" or 12" patterns can help reduce the appearance of a low ceiling. Conversely, darker colors work well if you have high ceilings. A common decorating mistake is to choose a ceiling and wall color that is too pale or washed out. As a general rule, the larger the room, the more depth a ceiling and wall color needs. The colors do not have to be bold, but they should be strong. For example, if bold and bright colors aren't in your palette preference, opt for a dark tans or dusty browns.

THEME ROOMS



Specially designed "theme" rooms have been popularized by TV shows such as "Extreme Makeover: Home Edition" where M-Boss Inc. products have been featured on several episodes. Popular themes are Western, 50's Diner and Egyptian to name a few. And because M-Boss Inc. specializes in custom patterns and finishes, we are able to help you create whatever theme you are dreaming.

STYLE TIP!

When you are creating a special theme, be sure to use a pattern and finish which complements the theme. For example: Western-style rooms look great using the M-Boss Inc. Longhorn pattern in M-Boss Inc.'s Leather finish. When it's all done, be sure to accessorize the room with appropriately themed items.



TIN CEILINGS

CORNICE • MOLDINGS • MEDALLIONS

4400 Willow Parkway • Cleveland, OH 44125 • Toll Free: 866-88M-BOSS (866- 886-2677) • FAX: 216-641-7387

MIX AND MATCH PATTERNS

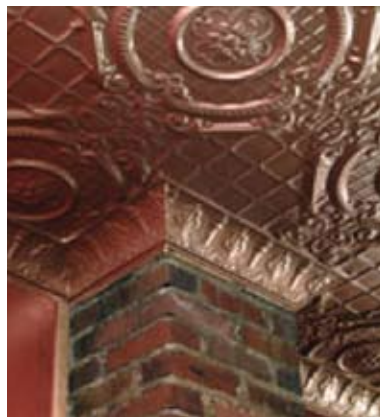


Today's eclectic and personal design trends allow maximum creativity. Home décor should be a way to express your personality through your surroundings, so don't be shy about mixing and matching patterns and finishes. However, be sure not to over-do the number of different patterns. And make sure the different finishes "complement" each other. If you have specific questions, don't hesitate to contact M-Boss Inc. Our designers will be happy to help make recommendations.

FINISHING TOUCHES

Professional designers know that finishing the room is the most important part of design. It's in the details. So as you create just the right look for your tin ceiling, don't forget to include: cornice, moldings, medallions, and fillers. Here's the reality of modern home construction: it's too expensive to put in elaborate, wood moldings. So, today's homes are built using skinny, wimpy trims and moldings. Often, windows are left with no moldings! Now, look at any home built in the early 20th century. Craftsmen of yesteryear always included wide, elaborate and eye-catching moldings. One of the easiest ways to inexpensively re-create this look is to use M-Boss Inc. pressed metal and molded resin products including: cornice, molding, fillers and medallions.

CORNICE



“ A perfect way to transition the ceiling with the wall. ”

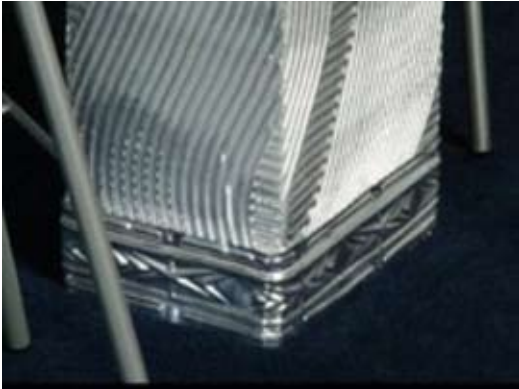


TIN CEILINGS

CORNICE • MOLDINGS • MEDALLIONS

4400 Willow Parkway • Cleveland, OH 44125 • Toll Free: 866-88M-BOSS (866- 886-2677) • FAX: 216-641-7387

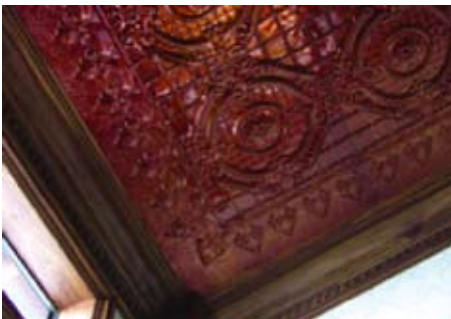
MOLDING



““ Adds flair on baseboards, chair rails and cabinet kick-plates.

””

FILLERS



““ Creates a design between the main ceiling panel and wall, eliminates the need to cut the main ceiling panels.

””

MEDALLIONS



““ Look great when combined with a tin ceiling or used alone.

””